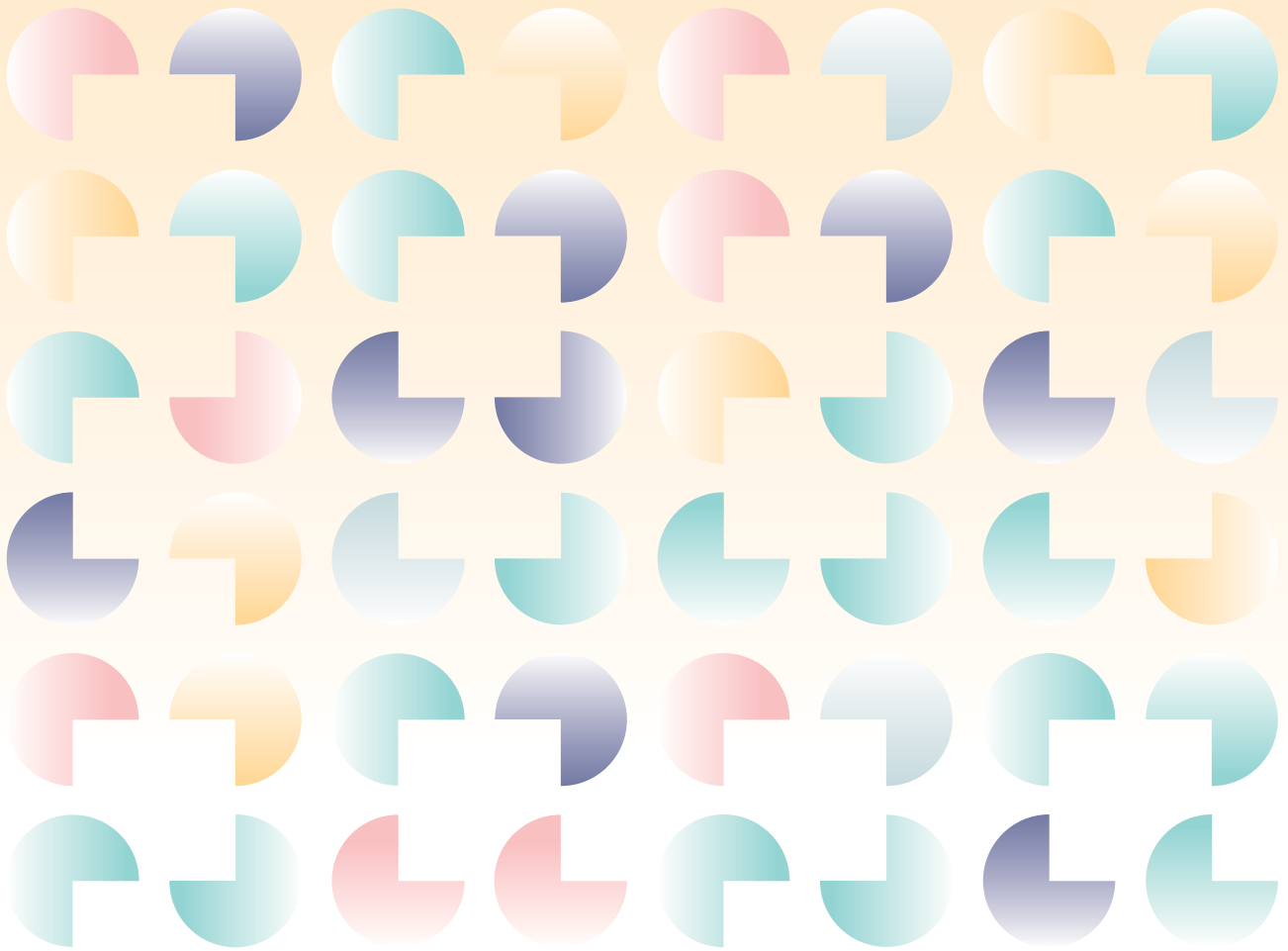


Guide for International Degree Students



CONTENTS

STUDYING AT UNIRI	2
ABOUT UNIRI.....	2
WHAT TO EXPECT? CROATIA INFO CARD.....	3
ENROL AT UNIRI	4
TYPES OF STUDY PROGRAMMES - OVERVIEW	4
STUDY PROGRAMMES IN CROATIAN LANGUAGE	5
STUDY PROGRAMMES IN ENGLISH LANGUAGE.....	6
LANGUAGE REQUIREMENTS	10
HOW TO BECOME A STUDENT AT UNIRI.....	11
STUDENT LIFE	14
COST OF STUDYING AND LIVING IN CROATIA.....	14
FOOD SERVICES	15
INTERNATIONAL STUDENT EMPLOYMENT AND SCHOLARSHIPS	16
DIVERSITY, INCLUSION AND STUDENT SUPPORT	16
AFTER GRADUATION	17
USEFUL LINKS	18

Meaning of terms

EU student. Student with citizenship of Croatia or any other country which is a member of the European Union.

Non-EU student is a student with citizenship from a country which is not a member of the European Union. A ***third-country national*** is a person who does not have the citizenship of the countries of the European Economic Area – EEA (European Union, Liechtenstein, Norway, Iceland) and the Swiss Confederation.

STUDYING AT UNIRI

ABOUT UNIRI

The University of Rijeka is a dynamic, socially responsible institution that embraces diversity, innovation, and international collaboration. With a vision to be ranked among the top 500 European universities, we are committed to continuous growth and development. Our focus is on creating an environment where students, researchers, and staff can thrive, fostering both scientific excellence and artistic creativity, while encouraging the expression of entrepreneurial talents.

Currently, the University of Rijeka is home to over 15,250 students, including 550 international students who contribute to the vibrant academic community through degree programs, mobility opportunities, and guest visits. As part of our mission to provide quality education, we are constantly enhancing our teaching methods and research capabilities, while ensuring a supportive environment for both students and staff.

In addition to our educational initiatives, the University of Rijeka plays a significant role in supporting social progress in northwestern Croatia. By investing in a state-of-the-art campus and a comprehensive system for lifelong learning, we are strengthening the region's competitiveness and fostering innovation.

As a proud member of the YUFE (Young Universities for the Future of Europe) Alliance, the University of Rijeka connects its students to a network of 10 prestigious European universities. This collaboration opens up exciting opportunities for academic exchange, access to a wide range of courses, participation in entrepreneurial projects, and engagement with innovative initiatives. Through YUFE, our students are encouraged to broaden their horizons, enhance their academic experience, and become part of a diverse and dynamic European university community.

WHAT TO EXPECT? CROATIA INFO CARD

Language. The official language is Croatian, written in Latin alphabet. In the coastal part of the country Italian can be useful, since local population uses a dialect related to it. If these are not your strong suits, don't worry – most of the younger population and officials speak English, so you should have no problem getting around if you are proficient in English.

Religion. According to the latest census (2021), 79% of Croatian population consists of Catholics, while other religions are represented to a lesser extent: 3.3% Orthodox, and 1.3% Muslims. Agnostics and atheists share less than 5%. In Croatia, major holidays are based on catholic liturgical year, although members of other denominations are free to celebrate their holidays and practice their religion customs.

Politics and economy. Croatia is a democratic republic with the President as the highest political function and elected Parliament. The country is divided into 21 self-governing counties. The capital is Zagreb, which is also the largest city, followed by Split and Rijeka according to their size. The official currency is Euro (EUR). The most developed economical sector is tertiary, especially tourism and hospitality.

Population. Croatian population is around 4 million people. Ethnically, the population mostly consists of Croats (>90%), while most national minorities include citizens from neighbouring countries.

Climate. Croatia has belts of different climate conditions: Mediterranean, continental and mountainous, but the climate can generally be described through dry and hot summers, as well as humid and mild winters. With an average of 2.600 sunny hours per year, the Adriatic coast is one of the sunniest in the Mediterranean, with average summer sea temperature from 25°C to 27°C. One more note: rain is not a strange sight in Rijeka.

Customs. Croatia is one of the Mediterranean countries which has a smaller interpersonal distance, so it's possible that people might stand close to you when talking, waiting in line or in populated places. Also, it is common to see warm relationships and close communication styles, even with strangers. Croatians are very proud of their long cultural and historical tradition, as well as sport successes. Let's not forget about food and drinks, which are also an important part of the culture. Croatia is generally considered to be a safe country with no major threats, beside the average risk of pickpocketing in the summer tourist season crowds.

ENROL AT UNIRI

TYPES OF STUDY PROGRAMMES - OVERVIEW

A) Study programmes in Croatian language

EU students. Students with citizenship from any EU country may apply under the same terms as Croatian citizens (in the same study quota, for all study programmes carried out at UNIRI).

The required level of language proficiency in Croatian depends on each Faculty/Department requirements (most require obtaining B2 level until the end of study level or before enrolling in 2nd/3rd study year).

Quotas and additional information for academic year 2025/2026 are published in application Call, in Croatian.

Non-EU students. Students from non-EU countries can apply for study programmes that include additional quotas for international students, which are limited and defined for each academic year.

The required level of Croatian language proficiency varies by Faculty/Department. Most require students to achieve a B2 level by the end of their studies or before enrolling in the 2nd or 3rd year.

Each Faculty may have additional requirements (language or other) for international applicants, which are defined in application Call for each study programme.

Tuition. Tuition fees are set by each Faculty based on the student category and field of study.

B) Study programmes in English language

At University of Rijeka, there are currently 10 Faculties that offer a full degree in English language:

Faculty of Medicine (integrated BA and MA)	50 students (50 HR/EU)
Faculty of Dental Medicine (integrated BA and MA)	12 students (12 HR/EU)
Faculty of Economics and Business (BA)	55 students (50 HR/EU + 5 non-EU)
Faculty of Economics and Business (MA)	30 students (25 HR/EU + 5 non-EU)
Faculty of Mathematics (MA)	10 students (5 HR/EU + 5 non-EU)
Faculty of Biotechnology and Drug Research (MA)	10 students (5 HR/EU + 5 non-EU)
Faculty of Civil Engineering (PhD)	15 students
Faculty of Tourism and Hospitality Management (BA)	60 students (60 HR/EU) 60 students

Faculty of Tourism and Hospitality Management (MA)	40 students
University of Rijeka-Centre for Urban Transition, Architecture and Urbanism DeltaLab (PhD)	12 students
Faculty of Humanities and Social Sciences (MA)	20 students
Joint YUFE Bachelor (BA)	20 students

Additional details, procedures and requirements for each program are available below.

STUDY PROGRAMMES IN CROATIAN LANGUAGE

University of Rijeka offers different **undergraduate study programmes** in Croatian language for EU students, as well as undergraduate study programmes which accept non-EU students. Quotas for both **EU** and **non-EU students** are defined within application Call for each academic year (i.e., 2025/2026). Quotas for non-EU students are listed under the title "stranci". Study program descriptions/quotas can also be found on postani-student.hr (in Croatian).

Graduate and **post-graduate** study programmes have separate quotas revised every year and defined by each Faculty.

More information on studies in Croatian language are available on the UNIRI [website](#) or by contacting Student service of each Faculty (general contact [list](#)).

STUDY PROGRAMMES IN ENGLISH LANGUAGE

University of Rijeka currently offers a total of twelve full degree study programmes in English language listed below, which accept both EU and non-EU students:

Faculty/Department	Faculty of Biotechnology and Drug Research	Faculty of Mathematics
Study programme	Biotechnology for the Life Sciences	Discrete Mathematics and Its Applications
Level of study	Graduate	Graduate
Type of study	Full-time	Full-time
Duration	2 years (4 semesters)	2 years (4 semesters)
Credits	120 ECTS	120 ECTS
Language	English	English
Start date	October	October
Tuition	4,500 EUR yearly	4,000 EUR yearly
Requirements	- Undergraduate degree in biology, chemistry or another relevant sub discipline (180 ECTS or equivalent) - English proficiency	- Undergraduate degree in mathematics or equivalent (180 ECTS or equivalent) - English proficiency
Other information	Link	Link

Faculty/Department	Faculty of Economics and Business	
Study programme	International Business	
Level of study	Undergraduate	Graduate
Type of study	Full-time	Full-time
Duration	3 years (6 semesters)	2 years (4 semesters)
Credits	180 ECTS	120 ECTS
Language	English	English
Start date	October	October
Tuition	1,061,78 EUR yearly	1,061,78 EUR yearly
Requirements	- Completed 4-year high school - English proficiency	- Undergraduate degree in (Business) Economics (180 ECTS or equivalent) - English proficiency
Other information	Link	Link

Faculty/Department	Faculty of Medicine	Faculty of Dental Medicine
Study programme	Medicine and Health	Dental Medicine
Level of study	Integrated undergraduate and graduate	Integrated undergraduate and graduate
Type of study	Full-time	Full-time
Duration	6 years (12 semesters)	6 years (12 semesters)
Credits	360 ECTS	360 ECTS
Language	English	English
Start date	October	October
Tuition	12,000 EUR yearly	12,000 EUR yearly
Requirements	- Completed 4-year high school - Entrance exam or passed prerequisites	- Completed 4-year high school - Manual dexterity test

	- English proficiency (B2)	- English proficiency (B2)
Other information	Link	Link

Faculty/Department	Faculty of Civil Engineering
Study programme	Civil Engineering
Level of study	Postgraduate (Doctoral)
Type of study	Full-time or Part-time
Duration	3 years (6 semesters)
Credits	180 ECTS
Language	English
Start date	Flexible (according to an open call for enrolment)
Tuition	1,327.23 EUR yearly
Requirements	<ul style="list-style-type: none"> - completed university graduate study (field of natural sciences or technical field), earned 300 ECTS credits including the undergraduate study - grade point average of at least 3.0 - at least one letter of recommendation - a certificate issued by an institution or other legal entity or a statement signed by the applicant about covering the costs of study
Other information	Link

Faculty/Department	Faculty of Tourism and Hospitality Management
Study programme	Business Economics in Tourism and Hospitality: Hospitality Management
Level of study	Undergraduate
Type of study	Full time or Part time
Duration	4 years (8 semesters)
Credits	240 ECTS
Language	English
Start date	October
Tuition	2,000 EUR yearly (EU students) 3,000 EUR yearly (non-EU students)
Requirements	<ul style="list-style-type: none"> • Completed four-year secondary school, • certificate of the state graduation exam, and • conditions acquired for the enrolment in the first year of study.
Other information	Link

Faculty/Department	Faculty of Tourism and Hospitality Management
Study programme	Joint professional graduate study Master of Sustainable Outdoor Hospitality Management
Level of study	Graduate

Type of study	Full time or Part time
Duration	2 years (4 semesters)
Credits	120 ECTS
Language	English
Start date	October
Tuition	10,530.43 EUR (EU students) 22,243.43 EUR (non-EU students)
Requirements	<ul style="list-style-type: none"> Completed BA degree in Tourism, Hospitality management, International Business, Management, Economics, Law, Geography, E-commerce, Urban Development, Social Sciences or Finance Completed undergraduate studies in the field of economics Acquired at least 180 ECTS
Other information	Link

Faculty/Department	Faculty of Humanities and Social sciences
Study program	Cognitive Sciences-Cognition and the Mind
Level of study	Graduate
Type of study	Full-time
Duration	2 years (4 semesters)
Credits	120 ECTS
Language	English
Start date	October
Tuition	1,100 EUR yearly
Requirements	Undergraduate degree in cognitive sciences or one of the cognitive sciences disciplines, including psychology, philosophy, linguistics, informatics, biology, biomedicine and anthropology. Students with undergraduate degree in other disciplines may apply, and are encouraged to reach out early to discuss eligibility.
Other information	Link

Faculty/Department	University of Rijeka-Centre for Urban Transition, Architecture and Urbanism DeltaLab
Study program	Urban Studies
Level of study	Interdisciplinary postgraduate specialist study program
Type of study	Part-time
Duration	3 semesters
Credits	90 ECTS
Language	English
Start date	Flexible-according to an open call for enrolment
Tuition	1,000 per semester
Requirements	The program targets international students holding at least master's degree and with a tendency towards interdisciplinary research and problem-based work, who have a practical background in disciplines close to the study program- certain technical and humanist fields, visual arts and geography. Proficiency in English mandatory.
Other information	Link

Faculty/Department	Joint YUFE Bachelor
Study programme	Urban Sustainability Studies
Level of study	Undergraduate
Type of study	Full-time
Duration	3 years
Credits	180 ECTS
Language	English
Start date	mid-September
Tuition	2,500 (EU/EEA students) 5,000 (non-EU/EEA students)
Requirements	- Completed 4-year high school - Minimum B2 level proficiency in English
Other information	Link

LANGUAGE REQUIREMENTS

For study programmes in English. Our general recommended level of language command for English is B2, in line with The Common European Framework of Reference for Languages (CEFR). Particular courses may have different requirements (e.g., courses related to language and literature studies). Depending on given admission requirements, your Faculty might ask you to provide a proof of language level. If so, you can use different proofs of language competences issued by relevant authorities, including (but not restricted to) TOEFL, IELTS, Cambridge Exam, TOEIC or other dependable certificates.

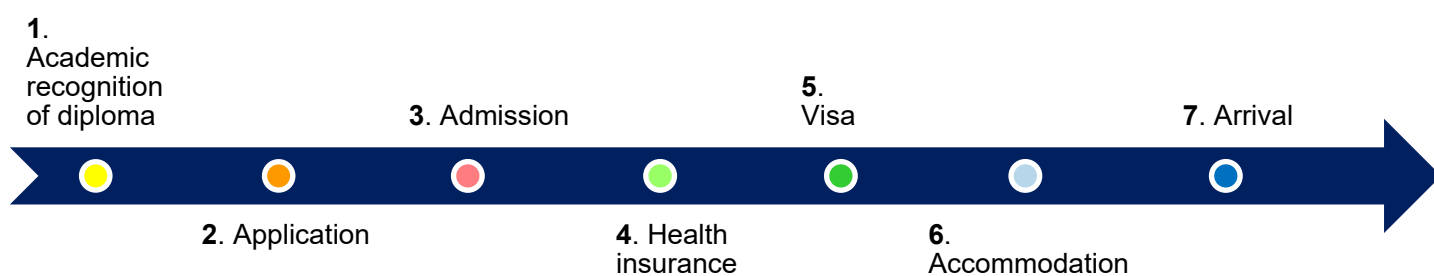
For this study type, Croatian language knowledge is not obligatory, but you can learn Croatian as a second or foreign language through courses held by Rijeka Croatist School ([link](#)). You can also check different options of learning Croatian language on the portal Study in Croatia ([link](#)).

For study programmes in Croatian. When applying for study programmes in Croatian, you might not be required to present a proof of language proficiency at the moment of enrolment. However, the expected level of language proficiency in Croatian depends on each Faculty requirements, and most require students to obtain B2 level until the end of study level or before enrolling in 2nd/3rd study year.

The official institution for obtaining B2 certificate in Croatian language for students is the National Centre for External Evaluation of Education ([link](#)). Other possibilities of obtaining level proficiency proof depend on individual decisions of each Faculty.

HOW TO BECOME A STUDENT AT UNIRI

In order to enrol as a full degree student at University of Rijeka, you will need to prepare through a few steps. Below you will find a timeline that contains steps necessary to enrol as an international student, together with a table that describes in detail each of these steps. Some steps might be different depending on your status (EU or non-EU student). If so, you will find a note about it in the description of the particular step. Beside the description, you will also find a column „Timeframe“, which indicates a period or possible duration to complete the step, so you can prepare for your admission accordingly.



STEP	DESCRIPTION	TIME FRAME	IMPORTANT DOCUMENTS in each step				
1 Academic recognition of high-school or undergraduate diploma	<p>Applying for undergraduate level → In case you didn't obtain your high-school diploma in Croatia, you need to apply for recognition of foreign education qualifications: LINK (scroll for English version)</p> <p>Applying for graduate level → In case you didn't obtain your undergraduate diploma in Croatia, you need to apply for recognition of foreign higher education qualifications: LINK</p> <p>Important: make sure to submit your recognition request early enough to meet the study programme application deadlines!</p>	Up to 60 days	<table border="1"> <thead> <tr> <th>Undergraduate level</th> <th>Graduate level</th> </tr> </thead> <tbody> <tr> <td> <ul style="list-style-type: none"> Request for recognition Last education certificate + certified Croatian translation Citizenship certificate Other enclosures stated in request form </td> <td> <ul style="list-style-type: none"> Undergraduate diploma Diploma supplement Transcript of records Undergraduate curriculum and admission requirements Citizenship certificate CV Other enclosures stated in application form </td> </tr> </tbody> </table>	Undergraduate level	Graduate level	<ul style="list-style-type: none"> Request for recognition Last education certificate + certified Croatian translation Citizenship certificate Other enclosures stated in request form 	<ul style="list-style-type: none"> Undergraduate diploma Diploma supplement Transcript of records Undergraduate curriculum and admission requirements Citizenship certificate CV Other enclosures stated in application form
Undergraduate level	Graduate level						
<ul style="list-style-type: none"> Request for recognition Last education certificate + certified Croatian translation Citizenship certificate Other enclosures stated in request form 	<ul style="list-style-type: none"> Undergraduate diploma Diploma supplement Transcript of records Undergraduate curriculum and admission requirements Citizenship certificate CV Other enclosures stated in application form 						
2 Submitting application for study programme	<p>On the following links you can find application procedures for study programmes in English language:</p> <p>Biotechnology for the Life Sciences Discrete Mathematics and Its Applications Medicine Dental Medicine International Business Civil Engineering Hospitality management Urban Sustainability Studies</p>	April – Sept (different for each study programme)	<p>Necessary documents may vary depending on each programme.</p> <ul style="list-style-type: none"> Application form Citizenship certificate Education certificate/diploma (original and recognition) Diploma supplement/transcript of records (MA level) Specific additional requirements (when applicable) 				

	Other: Call for studies in Croatian (undergraduate)		
3 Admission at Faculty/ Department	<p>Your admission will be confirmed through application results (ranking lists) for each Faculty and completed with enrolment process.</p> <p>Important: Each Faculty usually publishes an enrolment schedule which determines your time of enrolment.</p>	Jun – Sept (different for each study programme)	<ul style="list-style-type: none"> • OIB number (personal identification number issued in Croatia) • Residence card/permit (upon issuance) • Payments (tuition and fees) • Study contract/agreement prepared by Faculty
4 Health insurance	<p>All international students must have health insurance during their stay in Croatia.</p> <p>EU students. EU students can obtain free EHIC card which covers necessary medical assistance. Even with this card, it is recommendable to arrange for additional insurance coverage of regular health occasions.</p> <p>Travel and health insurance. The best option is to enrol in an insurance plan in the home country that covers one's stay in Croatia (which usually covers the duration up to 1 year).</p> <p>During your stay in Croatia, you have the possibility to enrol in Croatian health insurance fund (CHIF - HZZO) which offers comprehensive health care.</p> <p>Different procedures in Croatia might include the need for sufficient health insurance (e.g., stay regulation, medical care or work services). For this reason, when extending health insurance, it is recommendable to consider arranging CHIF - HZZO policy, since it is a generally accepted insurance proof in the country.</p> <p>Students from countries who have bilateral agreements with HZZO (EU, EEA, CH, BiH, MK, RS, TR, ME) can use health insurance according to their treaty.</p> <p>Important: If you require a Visa for Croatia, you will be obliged to provide evidence of medical insurance when you submit Visa request. The lowest sum <i>insured</i> for this purpose must be 30,000 EUR.</p>	1 – 15 days	<p>Necessary documents depend on the type of insurance agreement. You might need to provide some of the following:</p> <ul style="list-style-type: none"> • Insurance request/form • Home-country insurance proof • Personal identification document (ID or passport) • PIN (OIB) number • Proof of citizenship • Proof of residence/acceptance in Croatia
5 Visa application	<p>You can check Visa requirement details for your country HERE.</p> <p>If you need to obtain a Visa, you can find the procedure and all other details on the same link.</p>	15 – 60 days	<ul style="list-style-type: none"> • Valid travel document • Personal photo • Evidence of travel health insurance

	<p>Visa serves as a permit to enter the country, and can be issued for a maximum duration of 90 days.</p> <p>If a Visa is not required for your country, you can omit this step (e.g., students from most European countries don't need it).</p>		<ul style="list-style-type: none"> • Documents that prove the purpose of stay in Croatia, accommodation, means of subsistence and means of transport • Related to previous point – study offer/confirmation issued by Faculty
6 Accommodation	<p>University student dormitories. Rijeka has two student dormitories with a limited number of beds. International students on temporary stay (EU and non-EU) can apply for nonsubsidized rooms, subject to availability.</p> <p>Private housing. Private accommodation is a popular option, although finding an apartment in Rijeka might take some time (it's a coastal city with high rental demand), so be sure to start looking for an apartment/room as soon as you are accepted at University of Rijeka. You can look for listings on local rental portals or seek assistance from our University Centre and the Rijeka ESN student association.</p> <p>Hotels and Hostels. This is the most expensive option, but easily available since Rijeka offers a wide range of different ho(s)tel accommodation possibilities. Full list can be found HERE.</p> <p>You can also find more details on accommodation options in the mobility student guide (link).</p>	1-30 days	<p>Necessary documents depend on the type of accommodation agreement. You might need to provide some of the following:</p> <ul style="list-style-type: none"> • Acceptance confirmation / study enrolment proof • Personal identification document • If applicable: rental agreement
7 Arrival to Croatia	<p>PIN. After being accepted to the University of Rijeka, you will soon need your OIB (Personal Identification Number - PIN) for enrolment and other official procedures in Croatia. It is issued by the local Croatian Tax Administration, and the process is usually quick and straightforward.</p> <p>Stay regulation. Upon arrival to Croatia, in the following days you will have to register your temporary stay with Ministry of the Interior. You will have to present required documents and pay a fee to get your temporary permit. Application is submitted at a local police administration/ police station.</p> <p>Important. EU/EEA and third-country students can have different requirements to register their stay.</p>	1-8 days 1-14 days	<ul style="list-style-type: none"> • OIB Application form • Personal ID document <p>Note: when OIB is requested by e-mail, in some cases it may be required that ID document is certified by a notary public.</p> <p>Necessary documents for stay regulation depend on the student's citizenship. You might need to provide some of the following:</p> <ul style="list-style-type: none"> • Valid ID/travel document • Proof of purpose for temporary stay (e.g. enrolment confirmation) • Proof for means of subsistence • Health insurance proof

STUDENT LIFE

COST OF STUDYING AND LIVING IN CROATIA

When applying for a study programme in Croatia, you will need to cover some costs and fees related to your study programme or activities necessary to enrol and start your studies. In the table below, you can find a list of different fees and costs that might apply to your case. They are numbered as the same steps described in previous chapter *How to become a student at UNIRI*, so you can add the ones that apply to you in your calculation, step by step.

Tuition fees stated below refer to study programmes in English language.

Step	Activity	Fee/cost (in EUR*)
1	Recognition of a foreign education qualification (when applying for undergraduate level)	≈ 30
2	Application fee – Medicine	200
2	Application fee – Dental Medicine	250
3	Enrolment fee – Medicine/Dental Medicine	≈ 50-60
	Tuition fee – Medicine/Dental Medicine (yearly)	12,000
3	Yearly enrolment fee + insurance (EU) – International Business	≈ 53
	Yearly enrolment fee + insurance (non-EU) – International Business	≈ 331
	Tuition fee – International Business (yearly)	1,061.78
3	Enrolment fee – Mathematics	≈ 50-60
	Tuition fee – Mathematics (yearly)	4,000
3	Enrolment fee – Biotechnology	≈ 50-60
	Tuition fee – Biotechnology (yearly)	4,500
3	Enrolment fee + insurance – Civil Engineering	≈ 50-60
	Tuition fee – Civil Engineering (per semester)	1,327.23
3	Enrolment fee + insurance - Hospitality management	≈ 50-60
	Tuition fee- Hospitality management (yearly)	2,000 (EU students) 3,000 (non-EU students)
3	Enrolment fee + insurance - Joint professional graduate study Master of Sustainable Outdoor Hospitality Management:	≈ 50-60
	Tuition fee- Hospitality management (yearly)	10,530.43 (EU students) 22,243.43 (non-EU students)
3	Enrolment fee- Faculty of Humanities and Social Sciences	
	Tuition fee- Cognitive Sciences (yearly)	1,100
3	Enrolment fee - Center for Urban Transition, Architecture and Urbanism	
	Tuition fee - Urban Studies (per semester)	1,000
3	Enrolment fee - Joint YUFE Bachelor	≈ 50-60
	Tuition fee - Urban Sustainability Studies	2,500 (EU/EEA students) 5,000 (non-EU/EEA students)
4	Health insurance – EHIC card (EU students)	Free
	Private health insurance from country of residence (yearly)	≈ 100 – 500**

	Public health insurance in Croatia – HZZO (yearly)	≈ 877
5	Visa fee – exempt when Visa is for study purposes <i>Visa application requires health insurance coverage and proof for means of subsistence (see below) to cover the stay in Croatia.</i>	≈ 100
5	Means of subsistence*** (monthly)	≈ 160
6	Accommodation – unsubsidized dormitory bed (monthly) Private housing: room, apartment (monthly) Accommodation – hostels, hotels (monthly)	≈ 200 – 320 > 500
7	Temporary stay fees	up to ≈ 88

** A rough estimate; travel insurance cost is different for each country and depends on various factors like the length of stay, age, options coverage and other relevant factors.

*** Definition of adequate subsistence and acceptable proofs are subject to change (depending on legal predispositions and period of submitting visa application). In practice, students have to prove they own a bank account or other source with a minimum of 160 EUR as monthly amount. Proofs of subsistence can include guarantee letters or scholarship/grant agreements, if applicable.

As you might presume, calculating the cost of life in any country depends on different factors and can vary significantly for each student, depending also on individual needs and habits. However, average ranges can serve as great guidelines. On the following [link](#) you can find different data for the cost of living in Croatia, filter out Rijeka or make your own estimation. Just to get a quick orientation, here are a few common items and their middle-range prices:



Bread	1.40 EUR
Beer	3.50 EUR
Coffee	2.20 EUR
Coca Cola	2.70 EUR
Hamburger	9.00 EUR
Pizza (small)	13.00 EUR

Public transport. Public transport services in Rijeka are provided by *KD Autotrolej*, which operates a bus-line network divided into 4 zones. Students can obtain a bus pass which enables unlimited number of rides on a monthly basis. The monthly student price for 1st city zone is ≈21 EUR.

In order to obtain the pass, you need to fill in the [Application](#), present one photo, student status proof and residence confirmation.

FOOD SERVICES

Full-time students in Croatia are entitled to hold a student identity card (X-card), which is used to prove student's status and may be used to get discounts for some services, as well as eat in student cafeterias and restaurants.

The right to obtain X-card and be granted with a specific level of usage may depend on the study type or student category. X-cards are issued by each Faculty/Department, which can provide you with the information whether you are entitled to X-card.

The list of all student cafeterias and restaurants can be found [HERE](#).

INTERNATIONAL STUDENT EMPLOYMENT AND SCHOLARSHIPS

International students are entitled to perform occasional [student work](#) in accordance with the law governing student employment. They can work in Croatia through the Student Service, managed by the [Student Centre](#). It connects students with employers and offers part-time, temporary jobs that fit around study commitments. The service is available to both EU citizens and non-EU students.

Important: Full-time students in Croatia are not eligible to take on permanent employment (under employment contracts), regardless of student category (RH, EU or non-EU).

In order to study at Croatian higher education institutions, international students must have sufficient financial means for the duration of their stay in Croatia from personal sources or scholarship sources available in their countries or internationally.

Presently, the majority of Croatian higher education institutions do not offer scholarships or financial aid for international students. However, there are a number of scholarships available to international students through bilateral programmes administered by the Croatian Ministry of Science, Education and Youth or research project scholarships (e.g., [link](#)).

DIVERSITY, INCLUSION AND STUDENT SUPPORT

University of Rijeka includes a number of student services related to different aspects of support and counselling. Official services (free of charge) are provided within the University Counselling Centre and include Psychological Counselling, Academic Accommodations Counselling, and Professional Guidance & Career Development Counselling.

University of Rijeka is committed to assisting all students who have permanent, occasional or temporary difficulties in the implementation of daily academic activities due to illness or impairment. Students who require additional support or assistance regarding their disability or special educational need (e.g. visual, hearing, physical impairments, learning disabilities or illnesses) should contact the [Academic Accommodations Counselling](#) as soon as they are enrolled to University of Rijeka and before classes start. Office activities are tailored to individual student needs (e.g. exam exemptions, peer support or specialized transportation).

Like any other part of life, studying may also bring various challenges which can sometimes be easy to deal with, but sometimes also interfere with student's everyday lives. For this

reason, the University's [Psychological Counselling](#) offers students professional psychological help needed to improve the quality of studying and life or achieve their academic goals. Common activities include individual and group counselling, online learning assistance or psychoeducational resources (leaflets, brochures, workshops, lectures...).

University's [Professional Guidance & Career Development Counselling](#) provides students with professional assistance related to managing their careers, supports them in developing entrepreneurial skills, educates students how to increase their prospects on the labour market and connects them with potential employers. This is achieved through various activities like counselling, informing, educations or research.

UNIRI is committed to diversity and inclusion and aims towards addressing student's individual needs. For more information on student support services and Diversity & Inclusion at UNIRI contact us at diversity@uniri.hr.

AFTER GRADUATION

You would like to work in Croatia. Third-country nationals can work in the Republic of Croatia with a residence and work permit or a work registration certificate. According to current regulations, each year a quota is defined for highly qualified workers with foreign citizenships. *EU blue card* is a stay and work permit issued for specific jobs and valid for the employer with whom it was agreed.

You would like to work in EU. Depending on the country you plan on living and working in, as well as your profession, you might need to get recognition of your qualifications. Additional information can be found on the official website of European Union ([link](#)).

You would like to work in another country. You need to check the specific requirements and qualification recognition procedure for the specific country you are considering.

USEFUL LINKS

UNIRI	University of Rijeka official website
IURI	International UNIRI website
Study in Croatia	Portal with information about study programmes and student life in Croatia
Studij.hr	Information about studies, applications, calendar, study comparisons, ...
Visit Rijeka	Services and information about Rijeka
Mobility guide	International (mobility) student guide

Last updated on: [30-Mar-25](#)

Disclaimer: The information in this publication is for guidance only. While every effort is made to provide accurate and up-to-date details at the time of publication, the University of Rijeka does not guarantee the accuracy or completeness of the content. The University reserves the right to make changes to this publication at any time, without prior notice, at its sole discretion.